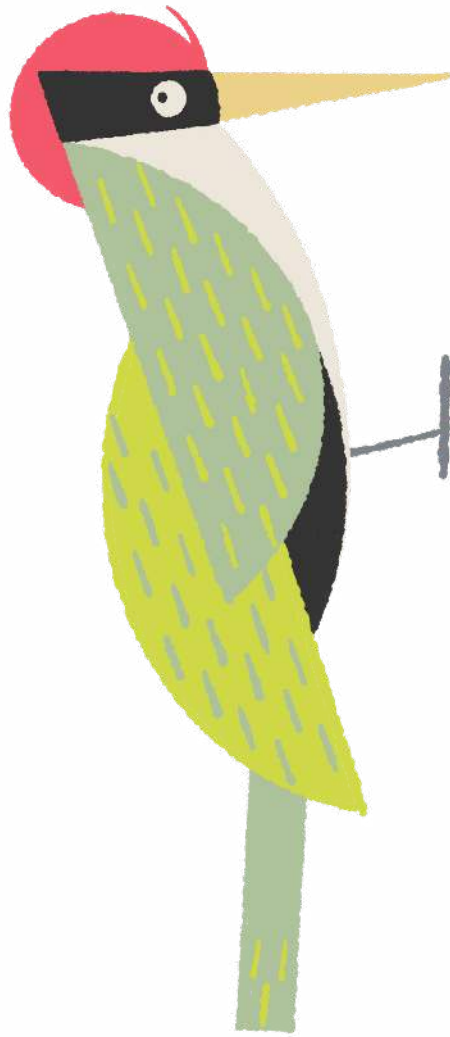


WOODPECKERS' CLASS GUIDE



2024-2025



READY,
RESPECTFUL,
SAFE
AND KIND



MEET THE TEAM

MRS LONNEN-SMITH

MRS.LONNEN-SMITH@STEBBINGPRIMARY.CO.UK

CLASS TEACHER

MRS PICKERING

HIGHER LEVEL TEACHING ASSISTANT (MONDAY - THURSDAY)

MRS ROONEY

TEACHING ASSISTANT (FRIDAY)



IMPORTANT REMINDERS

- Nail varnish must be removed for school.
- No jewellery (apart from ear studs) are to be worn at school and these must be removed by the child for them to take part in PE.
- Children must have a water bottle in school every day.
- Please ensure that all of the children's items of clothing are clearly named.
- Please remember that we are a 'nut free' school.
- Please ensure you provide your child with a healthy snack for break time.



**Just a
reminder...**

ENGLISH

READING

The expectation with regards to reading at home is that it is done at least four times a week. Even if it is just a page, reading a menu when you are out for dinner, reading the information on cereal packets or a book. It is important to all other areas of development to have time to read and discuss books with children.

An adult will check the reading records on a daily basis, so if you have read with your child or if your child has read on their own please note this in the reading record so that we can monitor how they are progressing with their reading at home. The reading record may also be used for communication with us, please note any comments or questions you may have.

If your child has read consistently throughout the week (a minimum of four days), they will be rewarded with a Dojo. Children who have achieved the reading star status consistently throughout the year will be awarded with a bronze certificate for one term, a silver certificate for two terms and a gold certificates for all three terms.

At the end of the week, all children will take part in our weekly 'Book club' session on a Friday afternoon whereby children join up with their peers in other classes to share books from one of our many book club boxes. Topics include but are not limited to; sport, history, geography, comedy, science, art and newspapers.

Throughout the day, adults in the classroom will be listening to your child read. We also have whole class guided reading sessions timetabled throughout the week along with reading based activities planned in all elements of the curriculum.



SPELLINGS

Spellings are taught in discrete spelling lessons at Stebbing and are followed up throughout the week in other lessons throughout the curriculum to embed specific spelling patterns in order to support the children with their spelling.

Children will be taught a new spelling rule on **Monday morning**. During the session they will take part in a range of activities which will be reinforced by their spelling homework. For spelling homework this year, children will be assigned Spelling Shed assignments linked to the spelling rules being taught in class. These assignments will serve as a fantastic tool to help reinforce the skills being taught in school. I may also upload spelling assignments that specifically link to areas of the spelling curriculum that your child finds more challenging.

We will continue to upload a selection of fun spelling activities to the Woodpeckers class page on our website, should you wish to give your child an extra spelling challenge.

Spelling activities available on the class page:

- Alphabetical Order
- The Synonym Shed
- Crosswords
- Spelling Search
- Scrabble
- Battleships
- Define It



Any misconceptions or misunderstandings will then be identified and additional sessions will take place if and when required.

The children will also have plenty of opportunities to play on the Spelling Shed app within school.

MATHS

TIMES TABLES

All classes will have dedicated time in their timetable to practise the fluency of key mathematical concepts. This will either be in the form of 'Mastering Number' sessions, or general practice sessions depending on your child's year group.

The National Curriculum states the following times tables end of year expectations:

Year 1

- Start to know the multiples of 2, 5 and 10.

Year 2

- Know and recall multiplication facts for 2, 5 and 10 times tables and the related division facts.

Year 3

- Know and recall multiplication facts for 2, 3, 4, 5, 6, 8 and 10 times tables and the corresponding division facts.

Year 4

- Know and recall multiplication facts up to 12×12 and corresponding division facts.

Year 5

- Recall quickly multiplication facts up to 12×12 and use them to multiply pairs of multiples of 10 and 100.

Year 6

- Use knowledge of multiplication facts to derive quickly squares of numbers to 12×12 and the corresponding squares of multiples of 10.

MULTIPLICATION TABLES CHECK- YEAR 4

The purpose of the Multiplication Tables Check (MTC) is to determine whether pupils can recall their times tables fluently, which is essential for future success in mathematics. It will help schools to identify pupils who have not yet mastered their times tables, so that additional support can be provided.'

MATHS HOMEWORK

At Stebbing Primary School we use Maths Shed online quizzes for the children to engage with at home. Maths quizzes will be set on Friday for the children to complete by the following Friday if they wish. These are not compulsory. The quizzes will always relate to the maths concepts being taught in class at that time and will serve as a fantastic tool to help the children reinforce their learning at home. Maths Shed is best accessed through a browser as the app tends to be less reliable.

PHYSICAL EDUCATION

PE takes place every **Friday**, and on **Wednesdays** during our Enrichment cycle. However, children are expected to have their PE kit in school at all times...

INDOOR PE KIT

School PE polo shirt
School PE shorts/skorts
Bare feet



OUTDOOR PE KIT

School PE polo shirt
School PE sports jumper
School PE shorts/skorts
Jogging bottoms (if required)
Trainers



Children are also required to wear appropriate sports wear for any sports club that they attend either before school, at lunch or after school.

Children will not be able to take part in PE if they have earrings in that they cannot take out themselves or do not bring the appropriate clothing for the lesson.



In KS2, each class has the opportunity for a whole day at Forest School once a term with our fully qualified Forest School leaders Mrs Honeybee whilst accompanied by their class teacher and teaching assistants. Parents will be informed of these dates to ensure all children come to school with the appropriate attire.

In the winter, children should wear plenty of layers and waterproof clothing ensuring that they wear full length trousers/leggings and a long sleeve top. Children should also wear a waterproof coat and wellies or suitable footwear.

In the summer, children still need to ensure that they wear full length trousers/leggings and a long sleeve top as well as bringing in wellies or appropriate footwear for the day. It is also sensible to bring waterproof clothing in on the day for the typical English summer days.



UNHOMework



'Unhomework' is an alternative approach to the setting of homework. The aim of 'unhomework' is that it enables children to be creative, imaginative, independent and make their own decisions about what they want to work on at home which fits nicely in with our Montessori ethos that runs through the school.

By year 5 and 6, we hope to have prepared the children well enough to enable them to make their own decisions about what needs to be worked on, why it needs to be worked on and how they are going to work on it.

'Unhomework' suggestions:

- Posters, poems, plays, dances, stories, baking, presentations, construction projects, etc.

| 'Unhomework' Progression | |
|--------------------------|---|
| Wrens | In reception 'Unhomework' is known as Show and Tell. Children will be given a timetable at the beginning of the half term with some weekly themes to guide their Show and Tell for that week. Some will be simple themes that involve them bringing their favourite book or teddy to school and some will involve using a bit more imagination and creativity. It is important that your child brings their Show and Tell in every Friday to share with the class. <i>Show and Tell Theme Examples: 5 Things About Me, My Family, My Favourite Animal, If I was a Superhero I Would be..., When I Grow up...</i> |
| Robins | At the start of each half term children in Robins will be given an unhomework title to complete. The children have complete freedom and ownership as to how they complete and present their unhomework, having as little or as much adult help as needed. The 'unhomeworks' will then be shared with the class, in an exhibition, within the last two weeks of each half term. |
| Kingfishers | Children will select an activity once within a half term. The unhomework will be linked to a subject and there may be set guidance. However, we like to encourage the children to choose how they present their unhomework. Unhomework can be shared in class at any point within the half term. The unhomework details and requirements will be shared on the class dojo page. |

| | |
|-------------|--|
| Woodpeckers | Each term children will have the choice of several different 'unhomework' challenges. In Year 3 it is an expectation that they choose 3 of these for each term, to work their way through. They will present these to the class during our weekly Class Assembly. |
| Kestrels | Each child is required to complete three pieces of homework each term. At the beginning of each term the children will get an option of 4 unhomeworks sent home. They will need to choose 3 of these throughout the term. It is up to the children how they manage this and when in the term they complete it. Their unhomework will be shared with the rest of the class as and when they bring it in. Children that complete all 3 throughout the term will be rewarded for their efforts. |
| Ospreys | Children are required to complete 9 'unhomeworks' over the course of the year. It is up to the children how they manage this.. Their 'unhomework' will then be shared with the class and they will then self-assess and peer-assess their work within their 'unhomework' booklet. All 'unhomeworks' will be shared as and when appropriate during the school day. For all children who complete all 9 Unhomeworks, they will be treated to a reward at the end of the year to reward their efforts. |
| Owls | Children are required to complete at least two 'unhomework' tasks every half-term satisfying the criteria and headings set out at the start of the year by the children themselves. Their 'unhomework' will then be shared with the class and they will then self-assess and peer-assess their work within their 'unhomework' booklet. If the tasks are not completed in the time set, they will be carried over into the next half term. All 'unhomeworks' will be shared on a Monday or Friday afternoon. For all children who complete all 12 Unhomeworks, they will be treated to a reward at the end of the year to reward their efforts. |



CLASS DOJO

First and foremost, Class Dojo is a behaviour reward system whereby children are rewarded with a dojo to reinforce positive behaviour and our school values that have an impact on themselves, their class and the community. Children work throughout the year to work collaboratively to earn Class Dojos. At the end of the half term, if the class has reached their agreed target of points they can then enjoy their class reward.

Class Dojo can also be used to share children's work. Each class has their own page on top of the whole school page where notices, photos, important messages and general information can be uploaded. Children also have their own pages whereby they can select pieces of work they are particularly proud of to be uploaded and shared with their parents.

Please do not use the messaging function on the Class Dojo platform. The best way to get in contact with your child's teacher is to email them directly.

The Class Dojo application can be downloaded from the Apple Store whilst also being available on android devices through the Play Store.



1

1. Myself



2

2. My Class



3

3. My
Community

STEPS CHALLENGE

Children will be given a STEPS challenge booklet at the start of the year (replacements can be downloaded and printed from our website) where they will be tasked with completing a range of challenges to earn their STEPS badge at the end of the year. We would really appreciate your support in encouraging your child to undertake as many of the challenges as possible.

[Woodpeckers - Stebbing Primary School : Stebbing Primary School](#)



TRIPS & VISITS



At Stebbing, we aim to try and give all children the opportunity to have as many experiences as we can. To ensure you know what is coming up we have listed below the trips and visits that we plan to go on throughout the course of this year. These costs are approximate, based on previous visits, so please allow for some flexibility. We will send out the usual letters as soon as we have the dates secured with the providers.

| | Autumn Term | Spring Term | Summer Term |
|---|---|--------------------------------------|------------------------------|
| 1 | Barleylands £25 - 30 TBC | Braintree Museum £20 TBC | Portals to the Past (TBC) |
| 2 | Visiting Planetarium for the whole school £4.50 per child | A Joint trip with Kestrels is likely | |

We are now unable to subsidise school trips if families do not pay. A shortfall in payments would mean that unfortunately the trip will have to be cancelled for all pupils. We do try our very hardest to keep costs as low as we can and spread them out across the year so they are accessible for all.